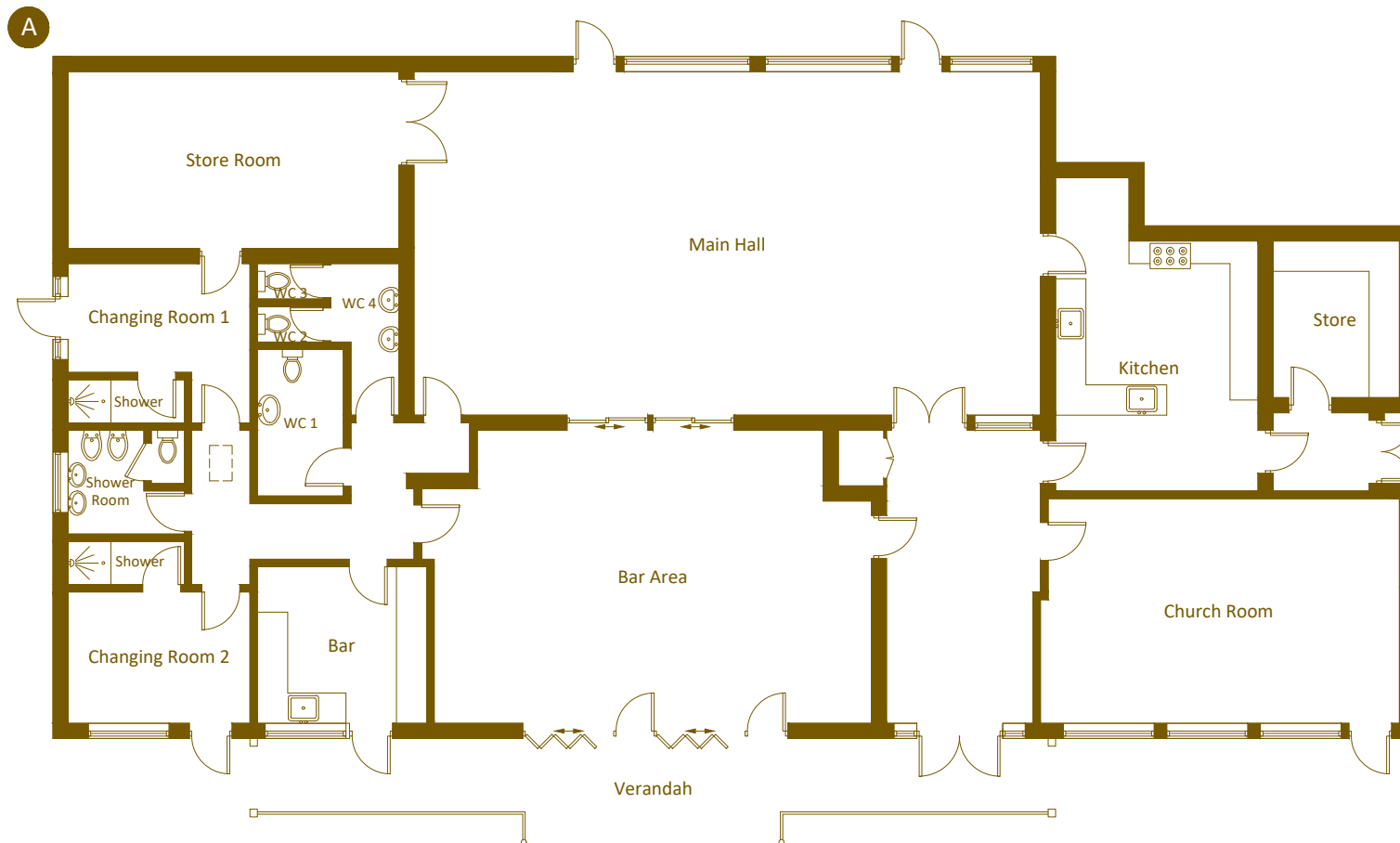


Hawkley Village Hall, Hawkley, GU33 3NA
 Approximate Gross Internal Area = 3435 sq ft



A. GROUND FLOOR

Store Room	6.60m x 3.45m (21'8 x 11'4)	WC 1	2.90m x 1.70m (9'6 x 5'7)
Changing Room 1	3.48m x 3.12m (11'5 x 10'3)	WC 2	1.32m x 0.79m (4'4 x 2'7)
Changing Room 2	3.48m x 2.62m (11'5 x 8'7)	WC 3	1.32m x 0.79m (4'4 x 2'7)
Church Room	7.09m x 4.47m (23'3 x 14'8)	WC 4	3.12m x 1.27m (10'3 x 4'2)
Shower	2.31m x 0.84m (7'7 x 2'9)	Bar	3.23m x 3.10m (10'7 x 10'2)
Shower	2.31m x 0.84m (7'7 x 2'9)	Bar Area	8.97m x 5.69m (29'5 x 18'8)
Shower Room	2.34m x 2.03m (7'8 x 6'8)	Main Hall	12.40m x 6.78m (40'8 x 22'3)
Kitchen	6.20m x 4.04m (20'4 x 13'3)	Store	3.12m x 2.49m (3.12 x 8'2)

Any areas, measurements or distances are approximate. The text, images and plans are for guidance only and are not necessarily comprehensive.